

**475 Market Street  
Elmwood Park, NJ**



**Office Space Available for Lease  
1,580 to 17,133 square feet/divisible**

- \* Class A Ownership.
- \* New Building Installation Available.
- \* Covered Parking.
- \* Minutes to the Garden State Parkway and Routes 80 and 46.
- \* Approximately 15 to 20 minutes to the GWB, NY State Thruway and NJ Turnpike.

Exclusive Broker:

**MRH**

REAL ESTATE SERVICES, INC.

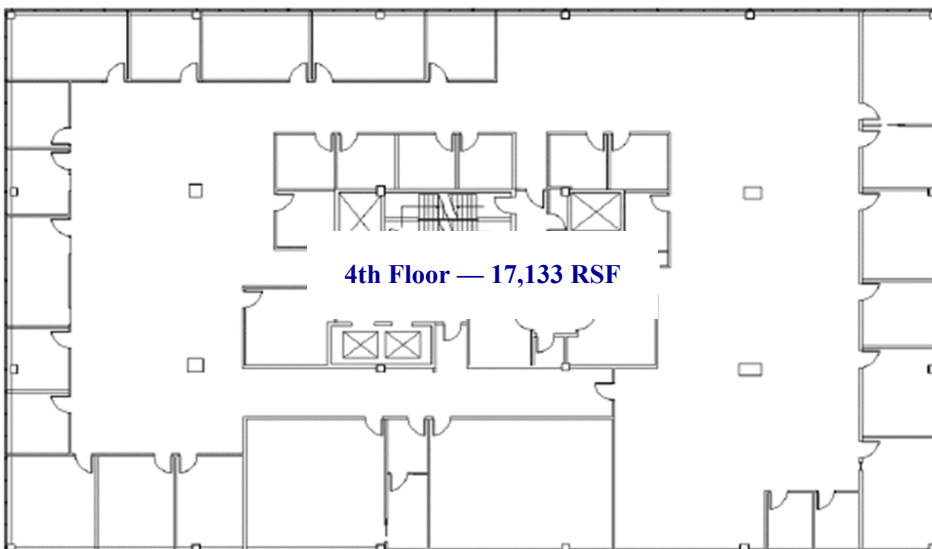
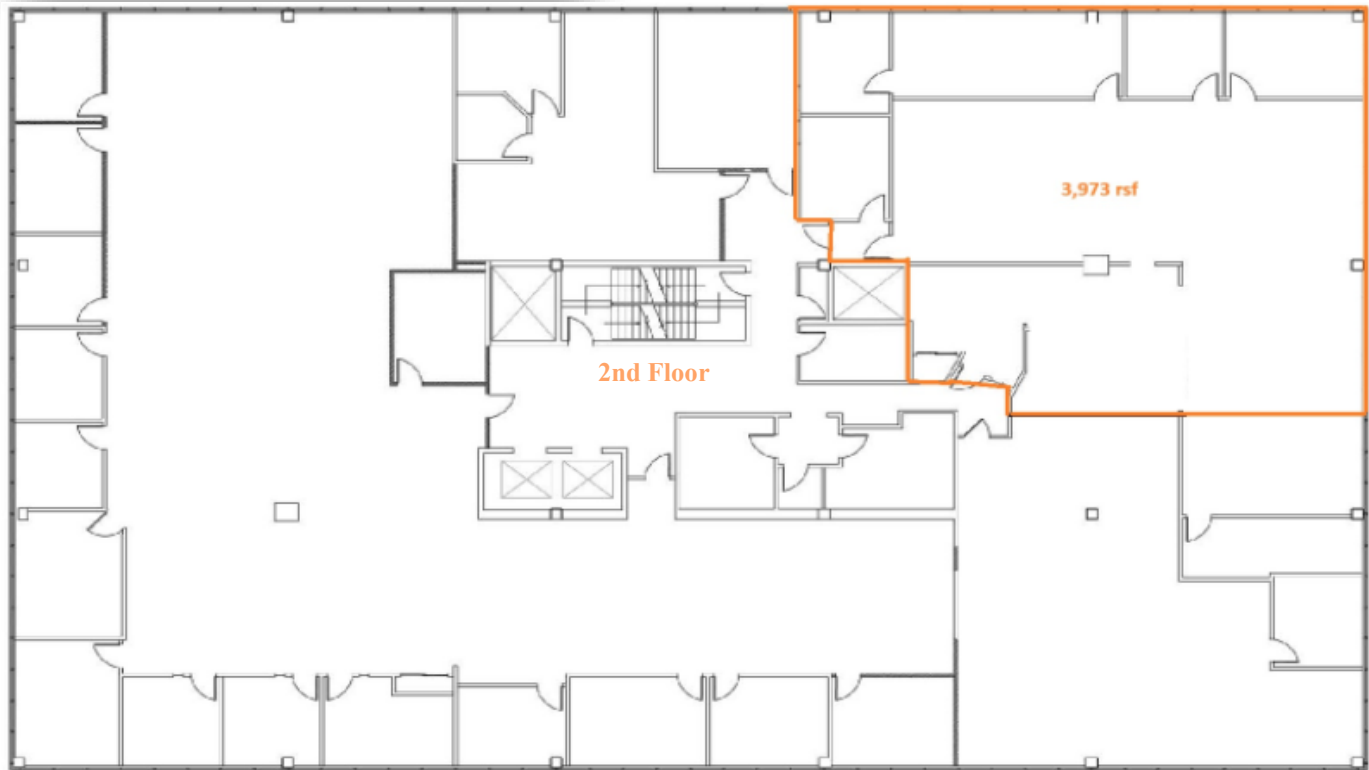
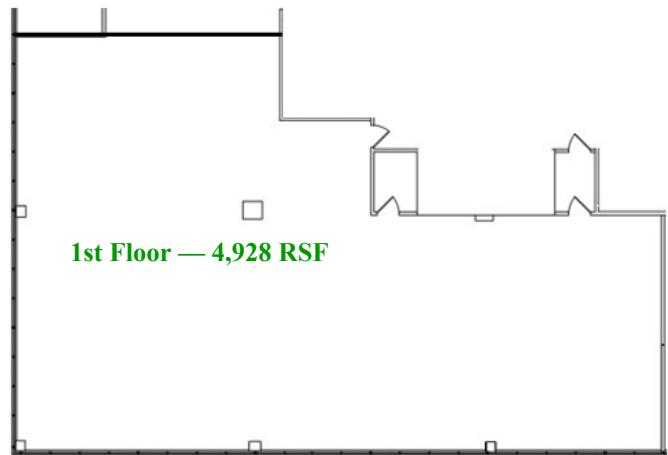
[www.mrhrealestate.com](http://www.mrhrealestate.com)

Max Troast  
201-819-3413  
[max@mrhrealestate.com](mailto:max@mrhrealestate.com)

Conor Ryan  
201-954-4755  
[conor@mrhrealestate.com](mailto:conor@mrhrealestate.com)

The information furnished above is from sources deemed to be reliable although such information has not been verified. No guarantee, warranty or representation is made hereby nor is any to be implied as to the accuracy thereof. The above is submitted subject to errors, omissions, change of price, rental or other conditions, prior sale, lease or financing, or withdrawal without notice..

# Office Space Available for Lease—475 Market St, Elmwood Park, NJ



**MRH**  
REAL ESTATE SERVICES, INC.

Max Troast  
201-819-3413  
max@mrhrealstate.com

Conor Ryan  
201-954-4755  
conor@mrhrealstate.com

Owned and managed by:

ALFRED  
**SANZARI** SINCE 1945  
ENTERPRISES