

333 Littleton Road
Parsippany, NJ



2,777 Square Feet Available On The 3rd Floor

Building Improvements Include:

- New Common Areas
- New Bathrooms
- New LED Lights
- New HVAC Units
- New Parking Lot
- New Façade
- Landscaping

Conveniently located just off Route 46 and within minutes of Routes 80, 202 & 287. Restaurants, banks, hotels and shopping nearby.

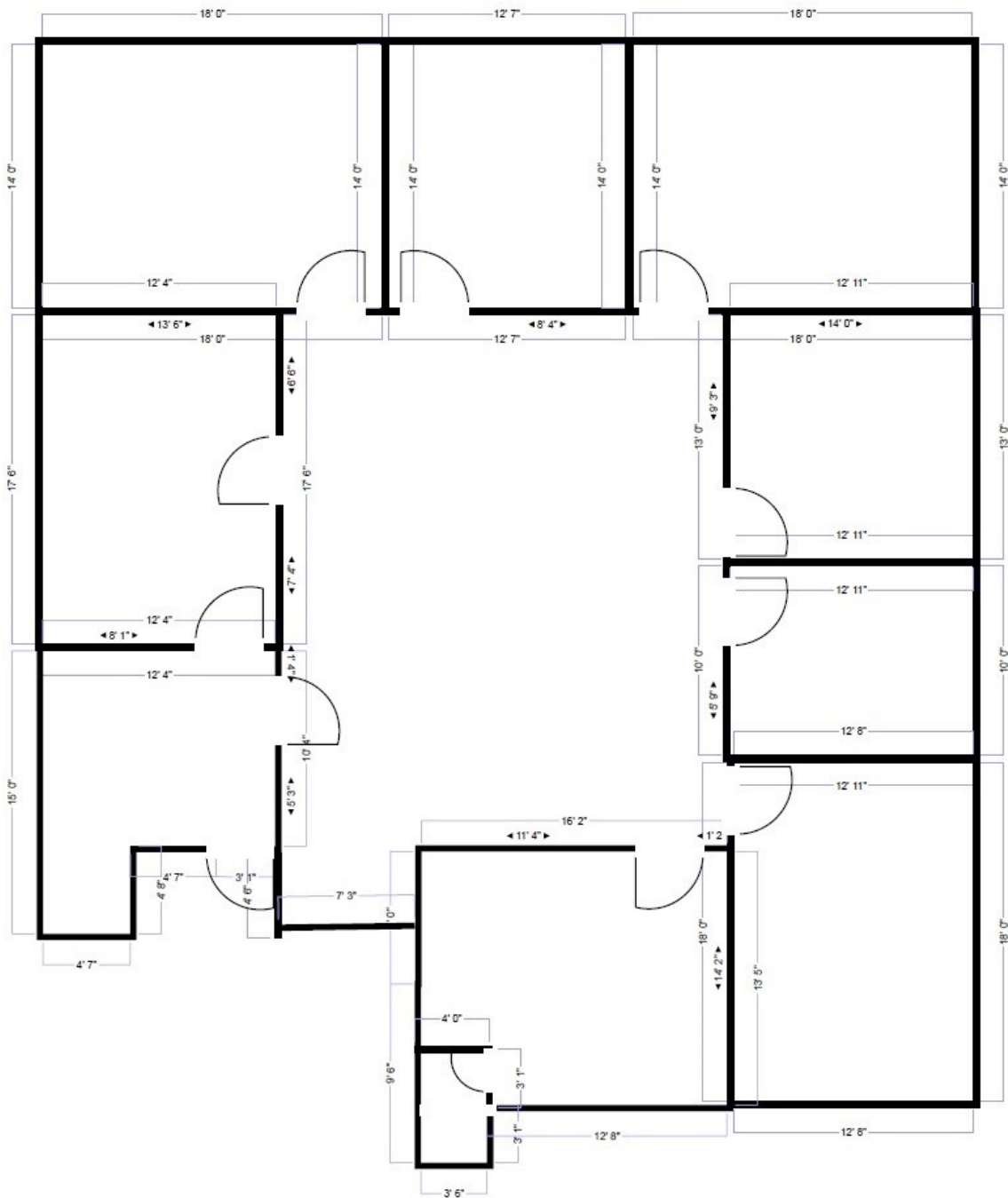
MRH

REAL ESTATE SERVICES, INC.

Mitch Helfman 201-291-3577
mitch@mrhrealstate.com

www.mrhrealstate.com

333 Littleton Road Parsippany, NJ



MRH
REAL ESTATE SERVICES, INC.

Mitch Helfman 201-291-3577
mitch@mrhrealstate.com

www.mrhrealstate.com