

## New Ownership/Management

333 Littleton Road, Parsippany, NJ



Units from 926 Sf to 2,808 SF Available

Building Improvements Include:

- New Common Areas
- New Bathrooms
- New LED Lights
- New HVAC Units
- New Parking Lot
- New Façade
- New Landscaping (Summer 2022)

Conveniently located just off Route 46 and within minutes of Routes 80, 202 & 287. Restaurants, banks, hotels and shopping nearby.

# MRH

REAL ESTATE SERVICES, INC.

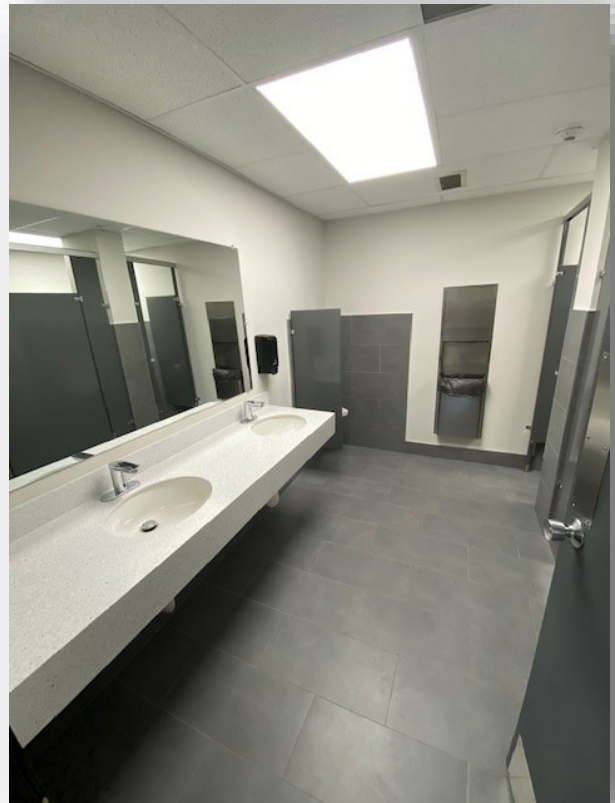
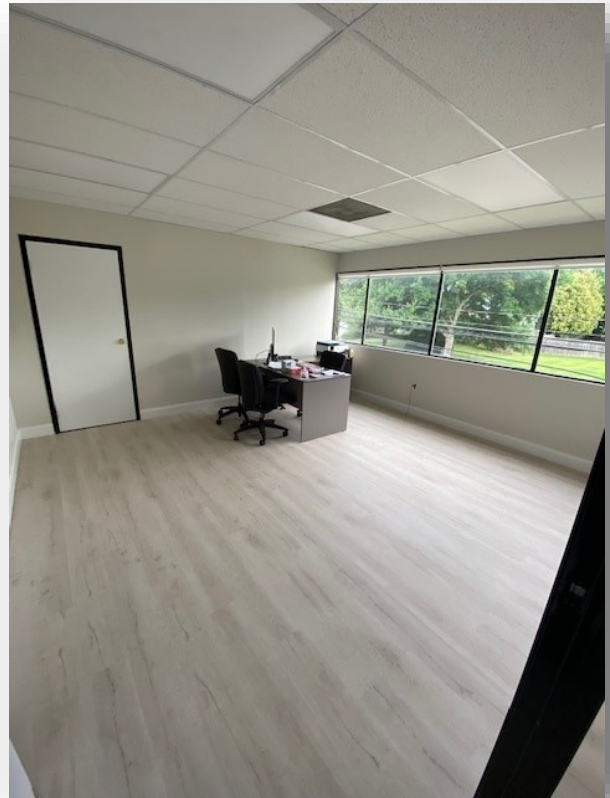
Max Troast 201-819-3413  
max@mrhrealstate.com

Mitch Helfman 201-291-3577  
mitch@mrhrealstate.com

[www.mrhrealstate.com](http://www.mrhrealstate.com)

## New Ownership/Management

333 Littleton Road, Parsippany, NJ



**MRH**  
REAL ESTATE SERVICES, INC.

Max Troast 201-819-3413  
max@mrhrealstate.com

Mitch Helfman 201-291-3577  
mitch@mrhrealstate.com

[www.mrhrealstate.com](http://www.mrhrealstate.com)